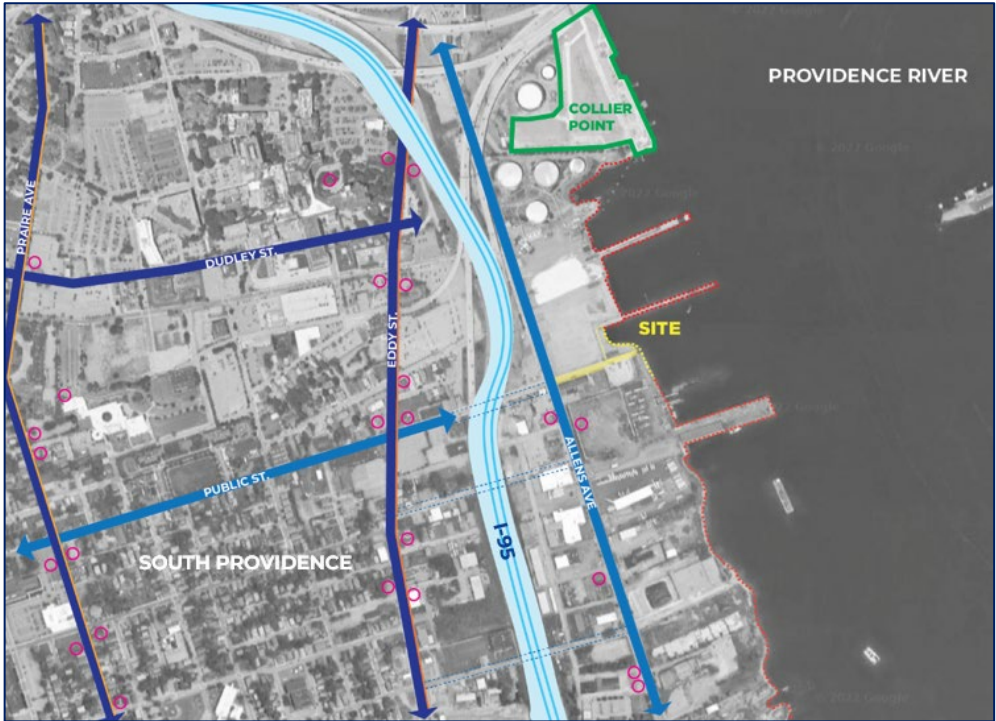
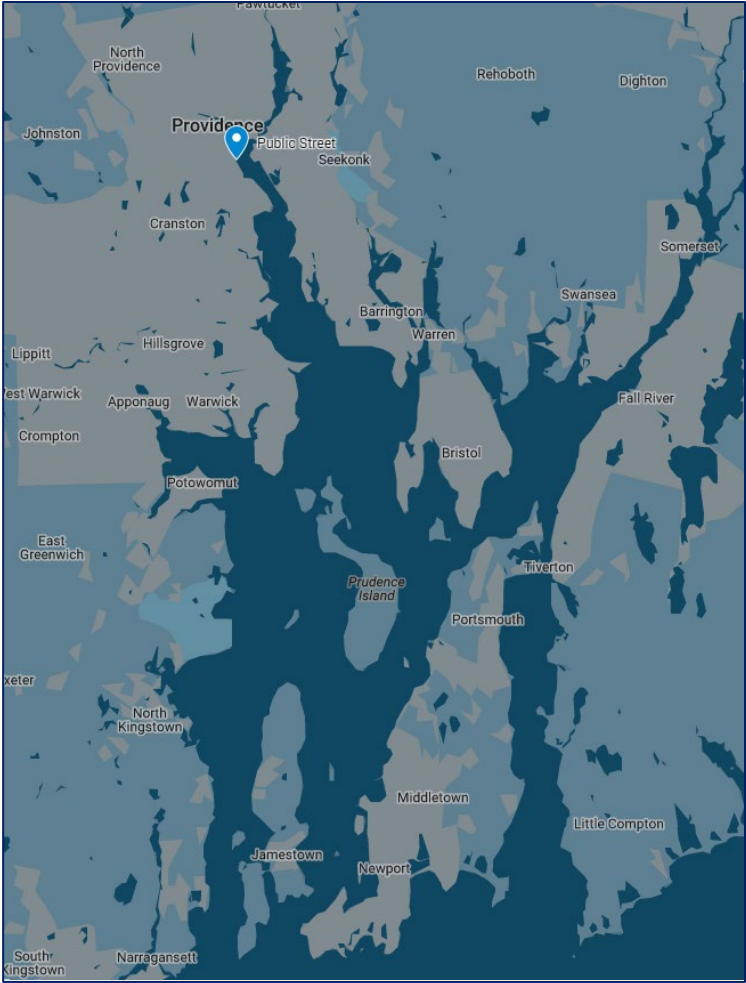


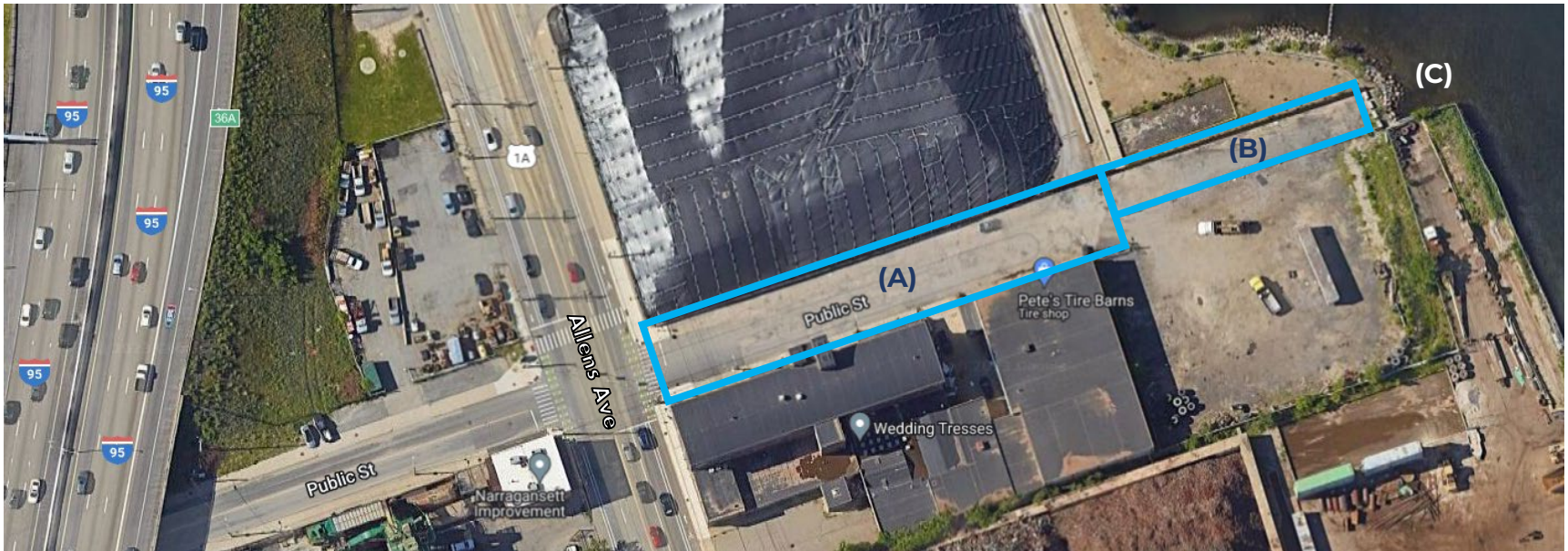
# Public Street Waterfront Access Project





# PUBLIC STREET | Existing Conditions

Public Street has three distinct areas:



**(A)** Wider portion of Public St. consisting of a paved asphalt street. Businesses located on the block require vehicle access and parking.



**(B)** Narrower unpaved portion of the right-of-way extending to the waterfront. This is a narrow stretch with limited vehicle activity.



**(C)** Waterfront area next to Public Street. Includes mudflat at low-tide. Location of proposed recreational doc.

# Public Street Waterfront Access Project

## Proposed Conditions | Site Plan (30% Design)





# Public Street Waterfront Access Project

## Proposed Conditions (30% Design)

